

11/8/11

New Community Supported Art will come to Berryville

By **STEPHANIE M. MANGINO**
The Winchester Star

BERRYVILLE — It might sound odd, but art is following agriculture's lead in Clarke County and putting a twist on the meaning of the acronym CSA.

The three letters usually stand for Community Supported Agriculture. Through such programs, people buy shares in a farm and receive its produce throughout the growing season.

But Berryville Main Street and its Fire House Gallery, inspired by a similar project in Minnesota, has connected the concept to art and will offer 25 shares of Community Supported Art starting Friday.

The shares, at \$50 each, will be sold on a first-come, first-served basis at the gallery, 23 E. Main St., and online at firehousegalleryandshop.com.

For that \$50, shareholders will receive one piece of art from each of three artists, with watercolor vignettes from Russ Harrison of Berryville, functional pottery from Kary Haun of Woodstock and fused glass work by Heather Mansfield of Round Hill.

They will also receive a CD from one of two county-based music groups, Where's Aubrey and Golden Butter Band, as well as a buy-one-get-one-free ticket to any concert at The Barns of Rose Hill and two tickets to either the spring or fall Art at the Mill shows at the Burwell-Morgan Mill.

The whole program was made possible by a grant from the Virginia Commission for the Arts, said Christy Dunkle, project coordinator, Berryville town planner and Berryville Main Street board member.

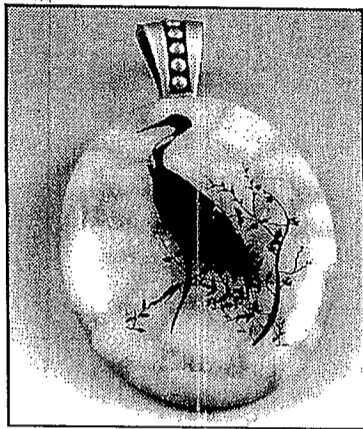
The artists, chosen by a jury from a pool of 10, were each given \$500 stipends to produce 25 artworks, she said.

While it's unlikely the project will break even, the goal should reap dividends in drawing attention to the county's artistic scene and offerings in the Fire House Gallery and Shop, she said.

The shares are giving buyers a bargain, too, with each bushel basket of art filled with items worth around \$100, she said.

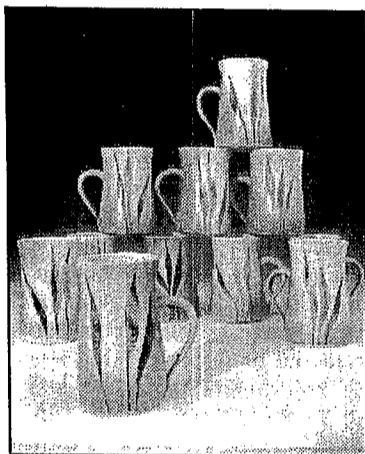
Dunkle learned about Community Supported Art after encountering it online from Springboard for the Arts' website.

She then contacted a St. Paul,



Photos provided by Berryville Main Street

This is a sample of Heather Mansfield's art work, a pendant, "The Great Blue Heron." She is from Round Hill.



Kary Haun of Woodstock made these functional pottery coffee cups.

The shares, at \$50 each, will be sold on a first-come, first-served basis beginning Friday, at the gallery, 23 E. Main St., and online at firehousegalleryandshop.com.

Minn., group to learn more about the effort and introduced the idea to Berryville Main Street.

By making the connection with agriculture, which has a long history in Clarke, she said she thought the Community Supported Art concept would work.

County resident Gary McGraw, who plays in Where's Aubrey, keyed into that connection when explaining why the group wanted

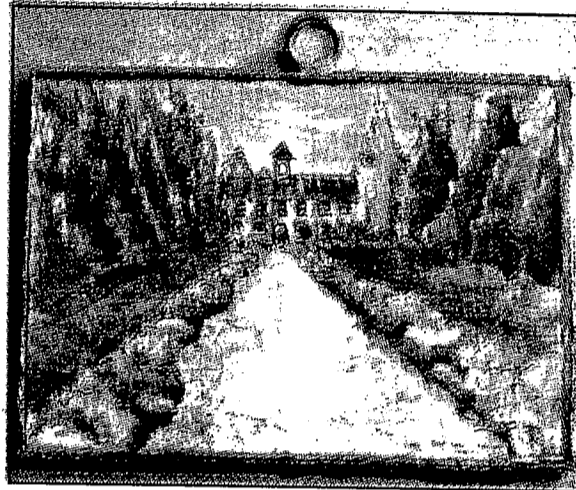


Photo provided by Berryville Main Street

This watercolor of Blandy Experimental Farm is by Russ Harrison of Berryville.

Art

from **Page B4**

to take part.

"I think anything that supports organic locally grown art is a great idea," said McGraw, who also sits on The Barns' board.

Where's Aubrey will provide supply copies of four of its six current CDs to be distributed among the art baskets, he said. Where's Aubrey's seventh CD is set for a December release.

With different types of art mediums included in each share, the project is "bringing the arts together in a great way," he said.

It may also make artists

aware of others' work as it promotes the county's vibrant arts scene, he said.

The local Community Supported Art program will have only one distribution this year, at a special 5 p.m. Dec. 2 event at the Fire House Gallery. Three distributions are planned for next year, Dunkle said.

"I'm totally psyched by this thing," Dunkle said.

For more information, contact Christy Dunkle at 540-955-4081 or planner@berryvilleva.gov.

— Contact S.M. Mangino at smangino@winchesterstar.com